



## The First Expo on Seaweeds!

- 1** Raising Global Awareness on Seaweeds!
- 2** Leading the Seaweed Industry and Securing Korea's Place by Constructing Cluster Cooperative System!
- 3** Creating New Added Value in the Seaweed Industry with Future Food, New Materials and Drugs, and Sources for Bio-energy!
- 4** Cultivating Local Industry as the Center of the Seaweed Industry



# WANDO SEAWEEDES EXPO 2017

April 14 ~ May 7, 2017(24Days)

## Access

WANDO SEAWEEDES  
EXPO 2017



### Access



**Incheon International Airport** → (4Hours by bus, frequently serviced) **U-Square (Gwangju Bus Terminal)** → (2Hours by bus, frequently serviced) → **Wando**

**Incheon International Airport** → (1Hour by bus, 53minutes by subway, frequently serviced) **Gimpo International Airport** → (50Minutes by airplane, serviced 3 times a day) **Gwangju Airport** → (45Minutes by bus or subway, frequently serviced) **U-Square (Gwangju Bus Terminal)** → (2Hours by bus, frequently serviced) → **Wando**

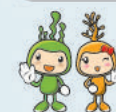


**Gimpo International Airport** → (4Hours 30minutes by bus, frequently serviced) **U-Square (Gwangju Bus Terminal)** → (2Hours by bus, frequently serviced) → **Wando**

**Muan International Airport** → (1Hour 50minutes by bus, frequently serviced) **Mokpo Bus Terminal** → (2Hours by bus, twice a day) → **Wando**



**Jeju International Airport** → (30Minutes by bus, frequently serviced) **Jeju Ferry Terminal** → (2Hours 50Minutes in the morning, 1hour 40 minutes in the afternoon; serviced twice a day) → **Wando**



### Organization Committee for Wando Seaweed Expo

55, Gaepo-ro 159beon-gil, Wando-eup,  
Wando-gun, Jeollanam-do  
Tel. 061) 550. 5047 [www.wandoexpo.com](http://www.wandoexpo.com)



## Introducing the Wando Seaweed Expo

### • Theme

## Pledge by Seaweed, Challenge for the Future



• **Dates** From April 14, 2017, to May 7, 2017 (24 Days)

• **Venues** Wando Harbor and Beach Park Area

• **Contents** Exhibitions, Experience Programs, Events, Academic Conferences, etc.

• **Host** Jeollanamdo WANDO COUNTY

• **Supervision** Organization Committee for Wando Seaweed Expo

• **Sponsor**

- Ministry of Maritime Affairs and Fisheries
- Suhyup Bank • Nonghyup Bank
- Korea Rural Community Corporation
- Korea agro-Fisheries & Food Trade Corporation
- Korea Fisheries Resources Agency
- Cheonan Nonsan Expressway



2017 Aerial View of Wando Seaweed Expo Site

## The First Maritime Exhibition in Korea

### Ocean Mystery Pavilion (Theme Pavilion)

#### ► The First 360° Cylindrical Water Screen

Water screen on the sea creates mystic 3D undersea images

### Human Wellness Pavilion

#### ► Sea Algae House with Kelp

Reveal the Real Eco-friendly Sea Algae House to tell the Value of the Necessities of Life

### Future Resources Pavilion

#### ► Real Scale Sea Algae Samples

Reveal the Life-size Sea Algae and Tell the Role of New Future Industries

### Seaweed Education Pavilion

#### ► Interactive Media, a New and Surprising Experience

Experience interactive media and lifecycle of seaweeds

### Global Environment Pavilion

#### ► Real Sea Algae Exhibition and Marine Forest in the Abalone Sea Tank

Reveal the Sea Algae and Marine Ecosystem in the large Abalone Sea Tank

### Business Exhibition Pavilion

#### ► B2B & B2C Biz-plaza for seaweed related industries

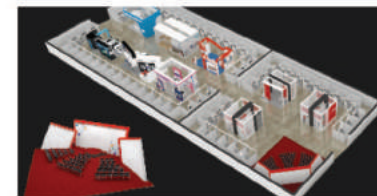
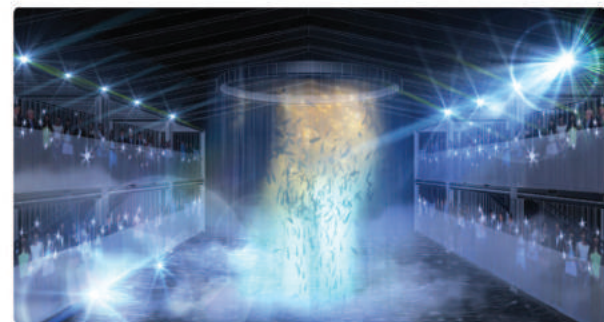
### Riding a Water Bike Activities

#### ► High Thrill, Riding a Water Bike on the Sea

### Sea Algae Activities

#### ► Touch and Feel the several kinds of Real Sea Algae grown in the Clean Ocean

### Seaweed Parade





## Fun-Packed Trips with Themes



### One-Day Course

Eastern Area ▶ Wando Seaweed Expo Site → Wando Tower → Chang PoGo Memorial Hall & Historical Sites in Jangdo Island → Wando Arboretum

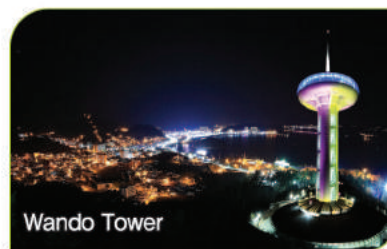
Western Area ▶ Wando Seaweed Expo Site → Wando Tower → Gugyedeung Beach of Jeongdo-ri → Cheonghae Port Film Set

### Two-Day Course

Wando Seaweed Expo Site → Chang PoGo Memorial Hall & Historical Sites in Jangdo Island → Wando Arboretum → Cheonghae Port Film Set → Wando Tower → (Stay for one night in Wando) → Filming Location for the Spring Waltz & Seopyeonje → Beombawi Rock → Stone Wall Path in Sangseo-ri

### Three-Day Course

Wando Seaweed Expo Site → Chang PoGo Memorial Hall & Historical Sites in Jangdo Island → Wando Arboretum → Cheonghae Port Film Set → Wando Tower → (Stay for one night in Wando) → Filming Location for the Spring Waltz & Seopyeonje → Beombawi Rock → Stone Wall Path in Sangseo-ri → Sinheung Beach → (Stay for one night on Cheongsando Island) → Yesong-ri Pebble Beach in Bogildo Island → Yun Seondo Garden → Dongcheon Stone Chamber in Buyong-ri → Mangkkeut Observatory



Wando Tower



Cheonghae Port Film Set



Chang PoGo Memorial Hall

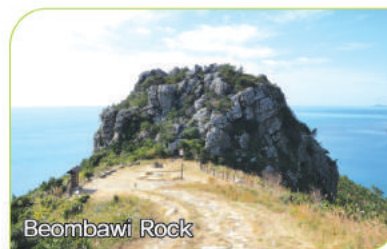
Cheonghaejin Historical Site



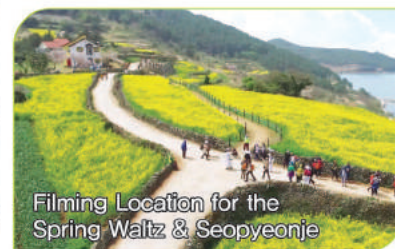
Wando Arboretum



Yun Seondo Garden



Beombawi Rock



Filming Location for the Spring Waltz & Seopyeonje



Slow Walk Slow on Cheongsando Island (Every April)

## Discount for Expo Ticket Holders

### 1. Discount for Entrance Fees to Major Attractions

- ▶ Free: Wando Tower, Wando Arboretum, Seyeonjeong Pavilion, Chang Pogo Memorial Hall, and Fishing Village Folk Museum
- ▶ Discount (30%): Cheonghae Port Film Set

### 2. Discount for Ferry Fare

Courses	Wando→Soan & Nohwa	Wando→Cheongsan	Wando→Jeju	
Discount Rate	10% for Single 20% for Group	10% for Single 20% for Group	The Blue Narae 10% for Single 20% for Group	Hanil Car Ferry 20% for Single 30% for Group

### 3. Discounts for Major Tourist Attractions Nearby

Region	Discounts Target	Discounts Content
Gangjin	Korean Minhwa Museum, Goryo Celadon Museum	500~1,000won
Haenam	Dinosaur Museum, Tiangkkeut Observatory, Wosooyeong Tourist Attractions, Yun Seondo Garden	300~1,000won
Jangheung	Jeongnamjin Observatory, Water Science Museum, Astronomy Museum	500~1,000won







## Seaweed & Seaweed Fishery Experience

Watch the live seaweeds, fishes and shellfish in their natural marine environment



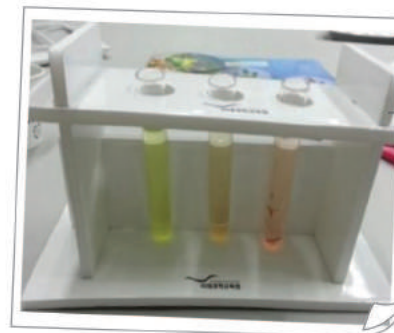
## Writing Contest - Seaweed Paper Experience

Write your story on the superb seaweed paper



## Seaweed Golden Bell Challenge

Quiz challenges on seaweeds and the ocean



## Pigment Separation from Seaweed

Separate pigments from seaweeds with different types of chlorophylls



## Seaweed Sensory Experience

Touch and feel the seaweed



## Seaweed Puzzle King

Put shreds of seaweeds on sketches of marine lifeform



## Make Seaweed Specimen

Make your own seaweed specimen for observation

