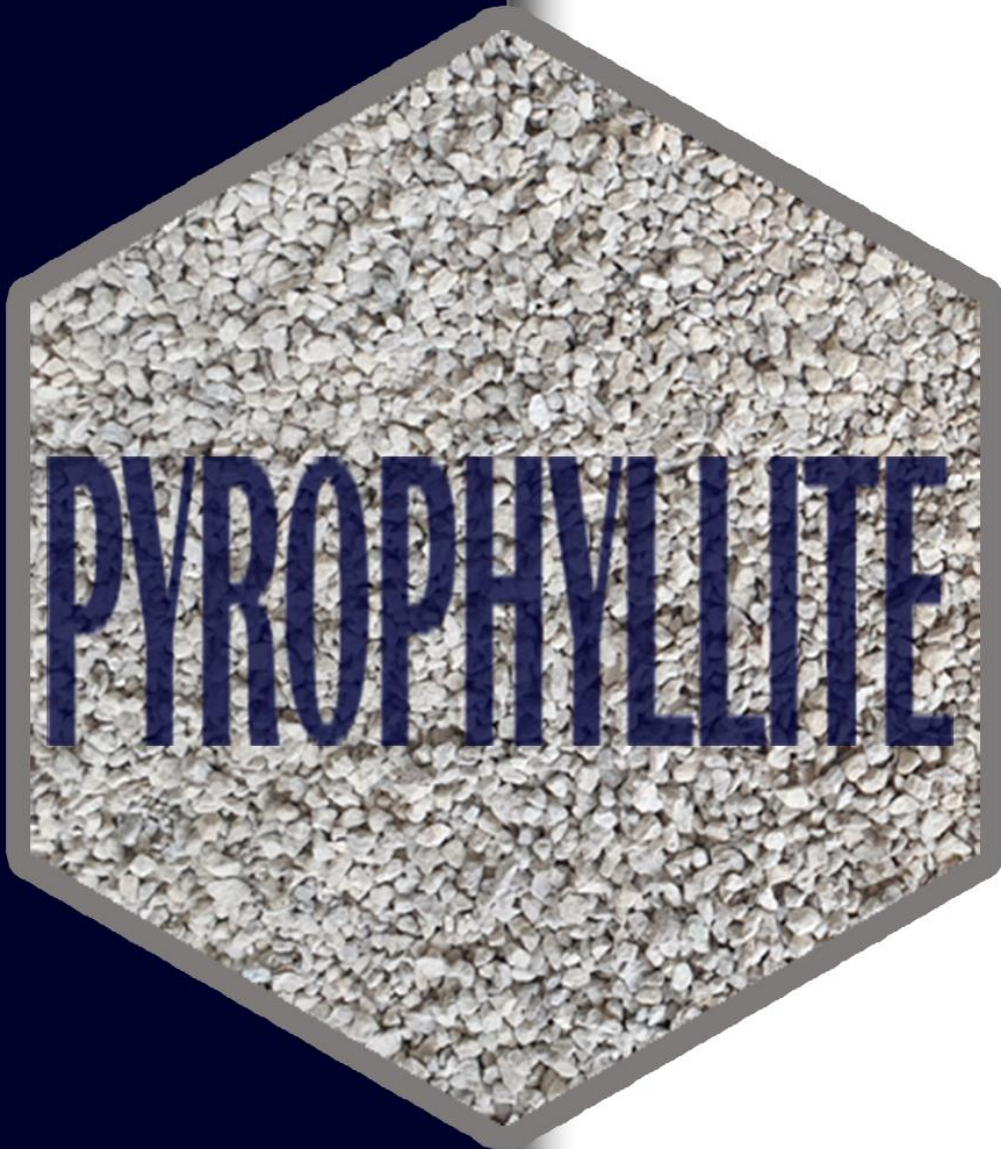




PT GUNUNG BALE

Best Investment On Earth



PT. GUNUNG BALE

Sumber Waras Street, No. 255 – Lawang
Post Code: 65216 – Malang East Java – Indonesia
Phone: +62 341 426681 Ext : 150, 151.
Fax: +62 341 426222
Email:
info@gunungbale.co.id,
marketing@gunungbale.co.id



Gunung Bale, PT is one of the leading and respected names in the Ceramics, Refractories & glass fiber industry as a supplier of various brands of The new Raw Materials Substitutes of Kaolin products (Pyrophyllite). A lot of hard and costly pioneering work was thus carried on by us from mining of suitable Pyrophyllite to sizing of the our mining to be able to satisfy our customer. Our advantage is that nature has given one of the best quality of Minerals (Pyrophyllite) in our mines all over the world. As the Minerals composition of Pyrophyllite give benefits about their minerals content to be alternative products exchanges of kaolin , so huge amount of research was done in selection of proper raw material, and every sample was actually painstakingly processed for its best activation and lab test carried out for each to find out its activity and efficiency of bleaching various minerals found in different structure.



To cope up with our customer demand which include so many Ceramic manufacturing, Paint Manufacturing , Feed Mill Industry and Glass Fiber. We manufacture various grades & sizes of Pyrophyllite suitable for their institutions Manufacturing Processes Minerals of the above grades has been found most economical and effective for application and are of uniform quality giving maximum efficiency.



Our hydrous aluminum silicate mineral $Al_2Si_4O_{10}(OH)_2$ (Pyrophyllite) found most suitable for raw materials in lots of industrial areas such as ceramics, refractories, petroleum industry, paper, paint and catalysis, etc. The application areas of minerals are directly related with their structure, composition, and physical properties. Pyrophyllite, $Al_2Si_4O_{10}(OH)_2$, is a relatively rare stones mineral which is used in the manufacture of refractoriness, ceramics, fiber glasses, paints, rubbers, paper, porous materials and insulating materials. In the literature, the raw pyrophyllite is used as an additive or substitute materials (Kaolin) at different amounts (max. 20 wt.%) into a conventional porcelain mixture . Our minerals (Pyrophyllite) is the most important Raw materials for Substitutes Products of Kaolin in the manufacturing Processes of Ceramics Industry, Refractories industry, Paint Industry and etc.

COMPARATION FOR SUBSTITUTION

Mineral	Hardness (Mohs)	Refractive Index	Density (gr/cc)	Particle Shape	Brightness (%)	Oil Absorption
TALC - $Mg_3Si_4O_{10}(OH)_2$ Hydrous Magnesium Silicate	1 – 1.5	1.59	2.75	Platy	80 - 90	25 - 55
KAOLIN - $Al_2Si_2O_5(OH)_4$ Aluminium Silicate Hydroxide	2 – 2,5	1.56	2.6	Platy	80 - 92	30 - 45
PYROPHYLLITE - $Al_2Si_4O_{10}(OH)_2$ Aluminium Silicate Hydroxide	2 – 3	1.59	2.8	Mixed : Platy & Irregular	75 - 80	24 - 26



NORMAL GRADE

ANALYTE	DESCRIPTION	SCHEME	UNIT	D.L	2D-2006
Wet_WT	Received Wet Weight	PREP_TOTAL	kg	0.001	3.23
LOI	Loss on Ignition	XRF_LOI	%	-10	4.11
SiO2	Silicon Dioxide	XRFPPS	%	0.01	75.09
Al2O3	Aluminium Oxide	XRFPPS	%	0.01	22.91
Fe2O3	Iron (III) Oxide	XRFPPS	%	0.01	0.25
TiO2	Titanium Dioxide	XRFPPS	%	0.01	1.01
CaO	Calcium Oxide	XRFPPS	%	0.01	0.19
MgO	Magnesium Oxide	XRFPPS	%	0.01	0.15
K2O	Potassium Oxide	XRFPPS	%	0.01	0.01
Na2O	Sodium Oxide	XRFPPS	%	0.01	0.12
P2O5	Phosphorus Pentoxide	XRFPPS	%	0.01	0.13
SO3(ppm)	Sulphur Trioxide	XRFPPS	ppm	10	1500
Cl(ppm)	Chlorine	XRFPPS	ppm	10	177

LOW GRADE

PARAMETER	UNIT	RESULT	METHOD
SiO ₂	%	76.65	XRF
Al ₂ O ₃	%	17.14	XRF
Fe ₂ O ₃	%	0.41	XRF
CaO	%	0.52	XRF
MgO	%	0.23	XRF
Na ₂ O	%	0.35	XRF
K ₂ O	%	0.24	XRF
TiO ₂	%	0.07	XRF
P ₂ O ₅	%	0.06	XRF
SO ₃	%	0.32	XRF
LOI	%	3.58	GRAVIMETRI
Moisture	%	1.24	GRAVIMETRI



ROCK TYPE SPECIFICATION CLASIFICACION



No	Rock Type	Chemical Composition (%)								Minerals Assemblage
		Al ₂ O ₃	SiO ₂	Fe ₂ O ₃	TiO ₂	K ₂ O	Na ₂ O	CaO	SO ₃	
1	GNG	24.00	75.50	0.04	0.23	0.01	0.07	0.01	0.03	Pyrophyllite, Quartz.
2	GRN	28.00	70.00	0.03	1.37	Tr	0.28	0.05	0.01 - 0.1	Pyrophyllite, Quartz, Rutile, Kaolin Minerals, Zunyite.
3	WHS	10.50	89.00	0.01	0.22	0.01	0.11	0.05	0.01	Pyrophyllite, Quartz, Kaolin Minerals.
4	WHI	13.00	86.00	0.03	0.38	Tr	0.09	0.11	0.09	Pyrophyllite, Quartz, Kaolin Minerals.
5	HRD	17.50	81.50	0.10	0.72	Tr	0.09	0.08	0.05	Pyrophyllite, Quartz, Kaolin Minerals, Diaspore.
6	BRX	17.50	81.50	0.04	0.70	0.01	0.11	0.09	0.05	Pyrophyllite, Quartz, Kaolin Minerals, Rutile.
7	BGR	23.00	75.00	0.05	0.97	Tr	0.16	0.06	0.01	Pyrophyllite, Quartz, Kaolin Minerals, Rutile.
8	GRS	28.00	70.00	0.03	1.37	Tr	0.28	0.05	> 0.10	Pyrophyllite, Quartz, Rutile, Kaolin Minerals, Zunyite.
9	PNK	17.50	81.50	0.02	0.59	Tr	0.08	0.07	0.03	Pyrophyllite, Quartz, Kaolin Minerals, Rutile.
10	PLP	25.00	73.00	0.04	0.96	0.01	0.14	0.07	0.17	Pyrophyllite, Quartz, Kaolin Minerals, Rutile.
11	PDP	26.00	64.00	4.00	0.69	0.02	0.05	0.16	5.03	Quartz, Kaolin Minerals, Pyrite

PRODUCT SIZE

No	Product Type	Size
1	Lump	0 - 300 mm
2	Lump	50 - 300 mm
3	Coarse Gravel	10 - 300 mm
4	Medium Gravel	10-20 mm
5	Fine Gravel	0-10 mm
6	Powder	mesh # 325

Standard Pyrophyllite classification (size) ranges from lumps 0/300 , 50/300 , coarse gravele 10/300, Medium Gravel 10/20 and Fine Gravel 0/10 Special sizes classification are also available on request.

ROCK TYPE SPECIFICATION CLASIFICACION



POWDER #325 MESH



FINE GRAVEL 0-10 mm



**MEDIUM GRAVEL
10-20 mm**



**COARSE GRAVEL
10-30 mm**



**LUMP
50-300 mm**



**LUMP
0-300 mm**



Domestic Industry

- PT. Dharma Perkasa Gemilang – Mojokerto
- PT. Platinum Ceramic Industry – Surabaya
- PT. Platinum Ceramic Industry – Gresik
- PT. Heang Nam Sejahtera Indonesia – Bogor
- PT. Tjahaya Group – Tulungagung
- PT. Indoporlen Refractories – Bekasi
- PT. Benteng Api Technic – Surabaya
- PT. Benteng Api Refractorindo – Blitar
- PT. Loka Refractories – Surabaya
- PT. Richo Refractory – Blitar
- PT. Keramik Diamond Industries – Gresik
- PT. Kobin Keramik Industri – Mojokerto
- PT. Asri Pancawarna – Karawang
- PT. Sinar Karya Duta Abadi – Mojokerto
- PT. Sun Power Ceramics – Mojokerto
- PT. Indobricks Sejahtera – Tangerang
- PT. Adyabuana Persada – Gresik
- PT. Kuda Laut Mas – Sidoarjo
- PT. Kualimas Aditama – Sidoarjo
- PT. Keramik Diamond Industries (Gresik)
- PT. Kobin Keramik Industri (Mojokerto)
- PT. Asri Pancawarna (Karawang)
- PT. Sinar Karya Duta Abadi (Mojokerto)
- PT. Sun Power Ceramics (Mojokerto)
- PT. Indobricks Sejahtera (Tangerang)
- PT. Adyabuana Persada (Gresik)
- PT. Kuda Laut Mas (Sidoarjo)
- PT. Kualimas Aditama (Sidoarjo)

International Industry

- Hattori Mineral Malaysia Sdn. Bhd – Malaysia
- Showa KDE, Co., Ltd. – Japan
- Rex Material Co., Ltd. – Korea
- Khadim Ceramics Ltd. – Bangladesh
- Sun Power Ceramics Co.,Ltd. – Bangladesh
- DBL Ceramics Ltd – Bangladesh
- Nitto Ganryo Kogyo Co., Ltd. – Japan
- Nissel Kyoeki Co.,Ltd – Japan
- Champion Building Materials Co.,Ltd. – Taiwan
- Nangchang Hengsui Industrial & Commercial Co.,Ltd. – China
- Sun Power Ceramics Co.,Ltd. (Bangladesh)
- DBL Ceramics Ltd (Bangladesh)
- Nissel Kyoeki Co.,Ltd (Japan)
- Champion Building Materials Co.,Ltd (Taiwan)
- Nangchang Hengsui Industrial & Commercial Co.,Ltd (China)

Distributor

- Marubeni Indonesia – Jakarta
- Focusindo Intermacs – Jakarta
- Nittindo Inti Cemerlang – Banten
- Rescom Mineral Trading FZE -UAE – Jakarta
- CV. Tripurwita Jaya Abadi – Tulungagung
- CV. Sarana MM – Jakarta
- Singmat PTE.,Ltd – Singapore
- Linyi King Metals Innovation Co.,Ltd – China
- CV. Tripurwita Jaya Abadi (Tulungagung)
- CV. Sarana Mm (Jakarta)
- Singmat Pte.,Ltd (Singapore)
- Tongxiang Bluston New Materials Co.,Ltd. – China

PROPERTIES MINERALS ABSORPTIONS AND APPLICANT CONTENT



minerals Pyrophyllite is recommended for all applications where good absorption and Refractories capacity is essential.

APPLICATIONS

This highly sorptive qualities of pyrophyllite make it ideal for a wide range of applications and has been effectively applied. With selective mining system of quarry that have been identified, we are proud to present the special grade product is excellent for

GLASS FIBER

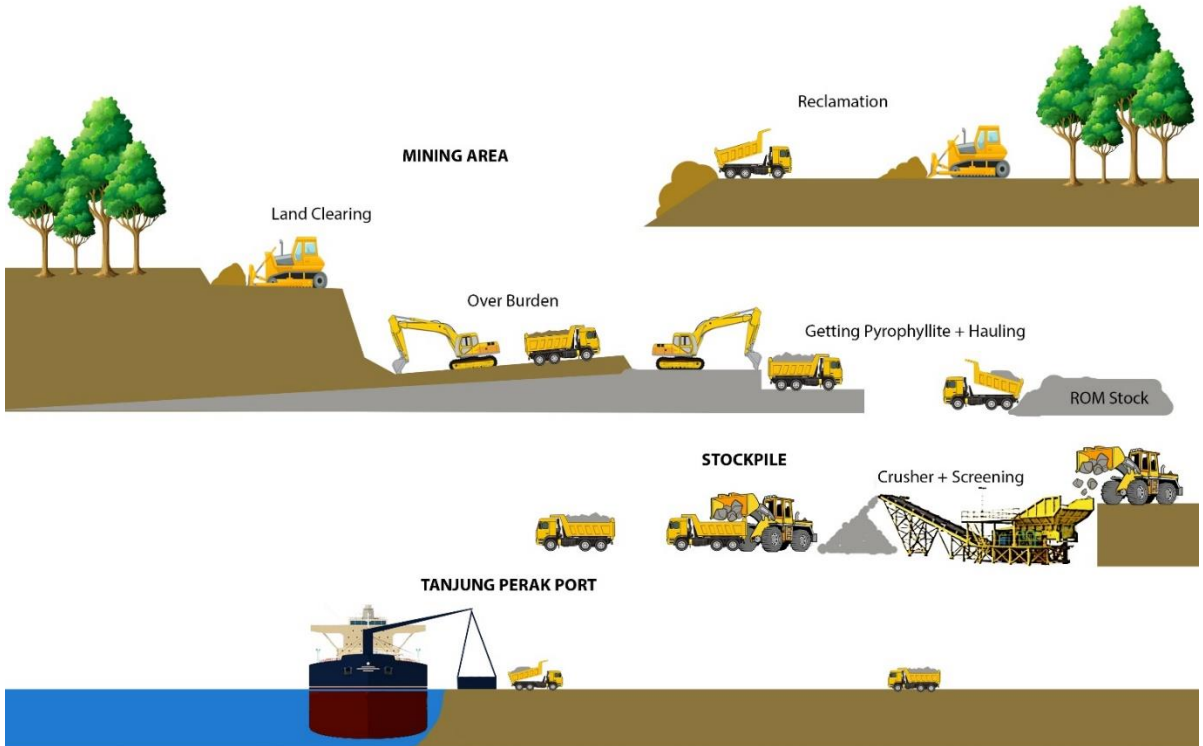
- High Alumina (Al_2O_3) = 22 – 26
- Low impurities : $Fe_2O_3 < 0.08$
- $Lol < 5.00$

CERAMIC

- negative shrinkage value (– 2.5)
- low density and low viscosity.

CERAMIC

- maximum alumina content, high purity nearly 100 of one rock type, so it is good as a refractory material.
- High Alumina($Al_2O_3= 26 – 28$)
- Low impurities : $Fe_2O_3 < 0.10$, others content is very low





M. SYAIFUL ISLAM J.
Supervisor Commercial Dept.

Address :
Pondok Belimbing Indah Blok J3 No. 6
Araya Residence, Malang
East Java, Indonesia

Phone :
+62 341 8221127 / 4373082 (Office)
+62 341 4373082 (Fax)

Email :
ab.gunungbale@gmail.com

Mobile :
+6281 2487 7878

Website :
www.gunungbale.co.id



Business : Pyrophyllite Mining & Processing
IUPOP / Mining Licence : No.180/0001/IUPOP/421.302/2014
Clean And Clear Certificate : No. 438/Min/31/2012

Head Office

- Location : Jl. Sumber Waras 255, Lawang, Malang, East Java

Mining Site

- Location : Argotirto, Sumbermanjing Wetan, Malang, East Java

- Land Area : 45 ha

- Mining Permit Area : 6.9 ha

- Office Building : 120 m²

Processing Plant

- Location : Tawang Rejeni, Turen, Malang, East Java

- Land Area : 41.000 m²

Office Building : 120 m²