



# PT. ALAM JAYA

EXPORT - IMPORT OF MARINE PRODUCTS





## Company Profile

Company Name.

**PT. ALAM JAYA**

Plant & Office

**Jl. Rungkut Industri II no.25  
Surabaya - Indonesia**

Telephone Number

**+62-31 849 5811 (Hunting)**

Facsimile

**+62-31 849 6167**

E-mail Address

**alamjaya@sby.centrin.net.id**

Plant Name

**PT. Alam Jaya**

Brand

**MOUNT Brand**

Approval Number

**423.13.B**

Registration EDA No.

**14579623202**

Starting Operation

**October 1998**

Lines of Business

**Marine Product Processing and  
Cold Storage Management**

Market Oriented

**Export and Domestic**

# Our Company



At first, we named our company "UD. Alam Jaya" and have directly exported our products abroad.

As our company has been expanded, we humbly change our company to become "PT. Alam Jaya" on 18 November 2001.

Finally, PT. Alam Jaya is legally registered in notary public on 20 November 2001 and 19 March 2002.

## Our Products

PT. Alam Jaya process Ribbonfish, Croaker, Leather Jacket, Milkfish, Tilapia, Snapper, Octopus, Squid, Cuttlefish, Tuna and others.

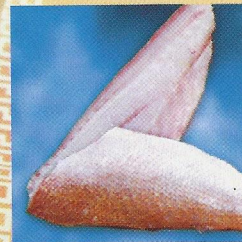
So far we have had Whole Round, WGGs/WGG, Fillet, Loin and Dressed for the process of those kinds of fishes



Sea Water  
Products



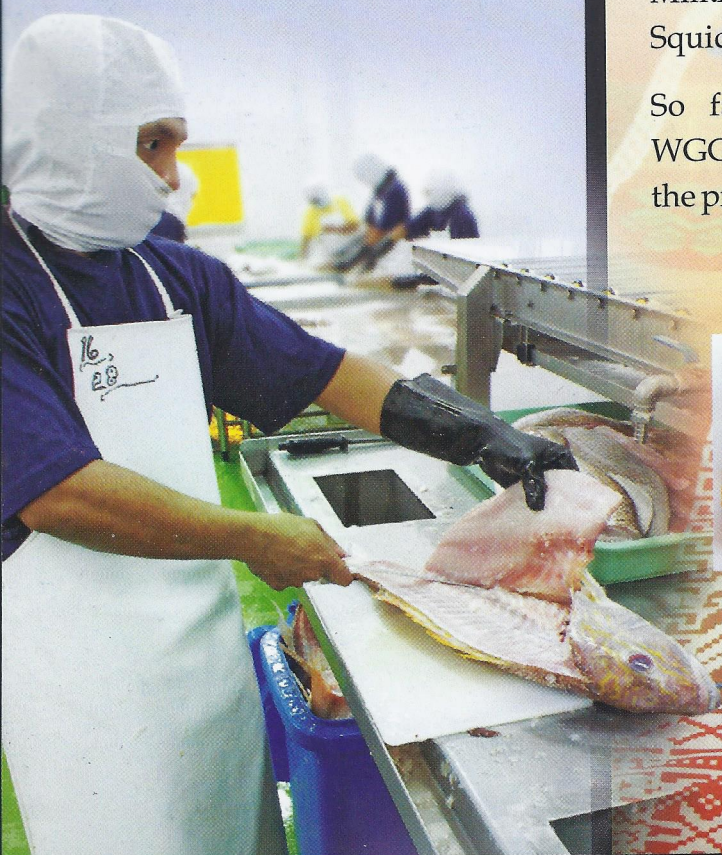
Value Added  
Products



Fillet



Fresh Water  
Products







## Our Facilities

- 2 units of Air Blast Freezer with the capacity 5 tons of each. The Freezing time is about 4 hours with the temperature -35 degrees until -45 degrees Celsius.
- 2 units of Cold Storage with the capacity 350 tons each. The room temperature -25 degrees Celsius.
- 1 Unit of Ice Flake with the capacity 10 tons a day.

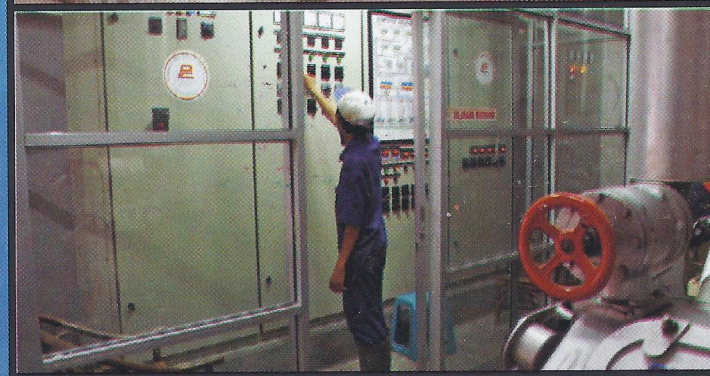
We have scanned all the fishes using Metal Detector just in case having fishing hooks and other metals carried along with them.

Beside the facilities mentioned above, PT. Alam Jaya has been hired 200 skilful workers, and our production capacity is about 20-30 tons each day.

## Our Coverage

We've been exporting our products to :

30% to Europe, 30% to USA, 20% to China, 10% to Korea, 10% to others.





# SEA PRO



**Scarlet Snapper**  
(*Lutjanus Sanguineus*)



**Squid**  
(*Loligo Spp*)



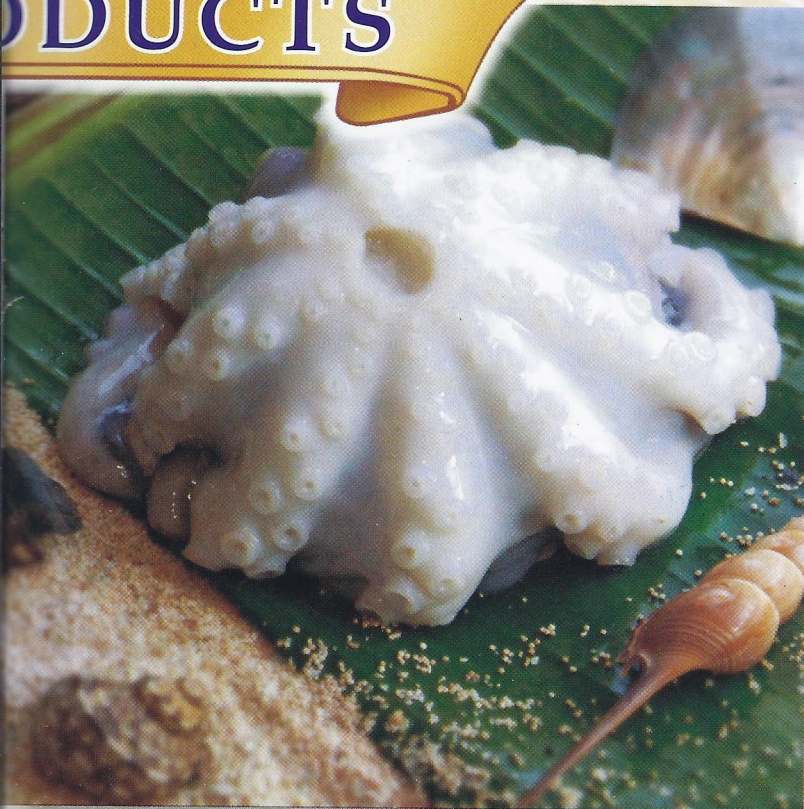
**Gulama**  
(*Pseudociena Amoyensis*)



**Ribbonfish**  
(*Thricurus Savala*)



# PRODUCTS



**Octopus**  
(*Octopus Spp*)



**Cuttlefish**  
(*Sepia Spp*)



**Scarlet Snapper Fillet**  
(*Lutjanus Sanguineus*)



**King Fish Steak**  
(*Scomberomorus Commerson*)



**King Snapper Fillet**  
(*Pristipomoides Multideris*)



**Malabar Snapper Fillet**  
(*Lutjanus Altitrontalis*)



## FRESH WATER PRODUCTS



**Milkfish - Whole Round**  
(*Chanos Chanos*)



**Milkfish - Deboned**  
(*Chanos Chanos*)



**Tilapia**  
(*Tilapia Mossambica*)



# VALUE ADDED PRODUCTS

## Breaded



**Breaded Fish**



**Breaded Shrimp**

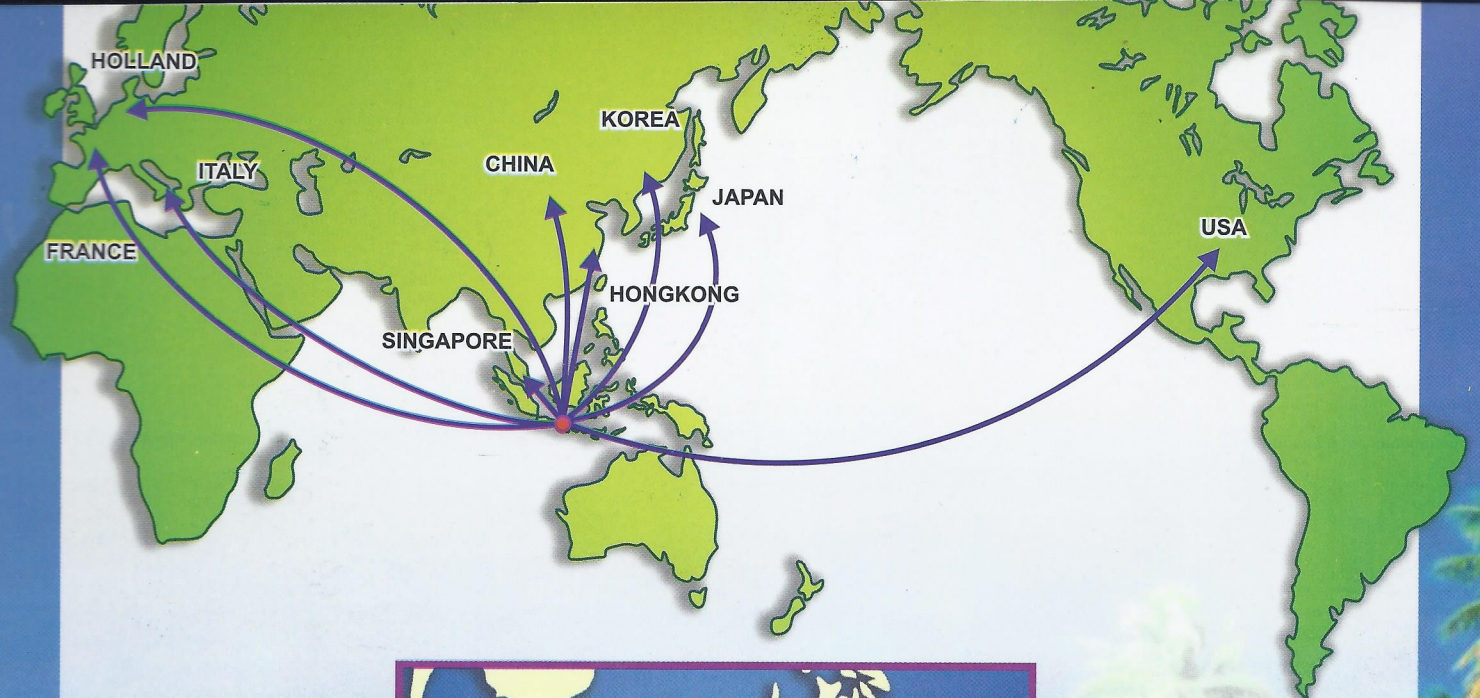


**Breaded Fish**

## Skewers







## **PT. ALAM JAYA**

### **Processing Plant & Office :**

Jl. Rungkut Industri II/25, Surabaya - Indonesia

Tel: +62-31 849 5811 (Hunting)

Fax: +62-31 849 6167

E-mail: [alamjaya@sby.centrin.net.id](mailto:alamjaya@sby.centrin.net.id)

Website: [www.alamjayaseafood.com](http://www.alamjayaseafood.com)

### **Contact Person :**

Marketing Division

Tel : +62-31 849 5811